

Artwork and Zine by Madison Bissel

Are you a dog owner?

Does your dog poop?

Do you sometimes contemplate whether you should pick it up or not?

WHEN I POOP,
YOU MUST
SCOOP!!



As a dog mom and a member of the dog walking community, I wanted to make it known what happens when you don't clean up after your dog.

DOG WASTE IS AN ENVIRONMENTAL POLLUTANT AND A HUMAN HEALTH HAZARD!



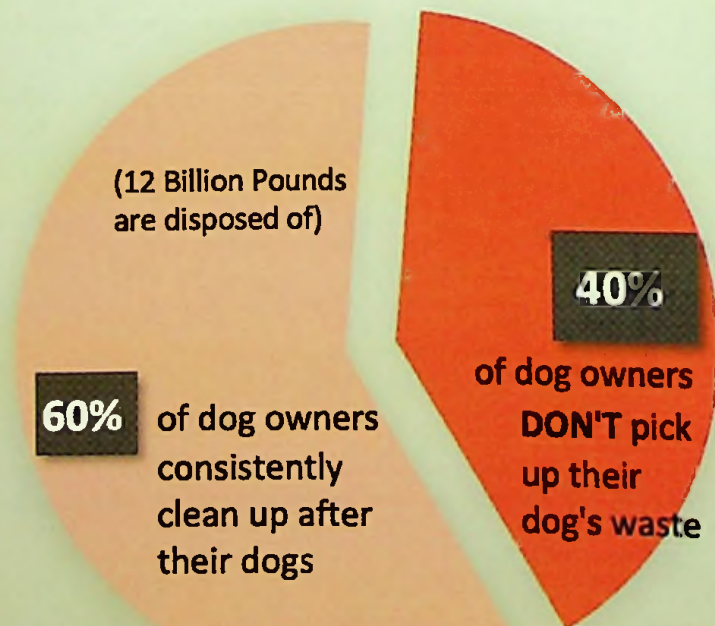
1 tiny gram of dog poop

just 1 dog



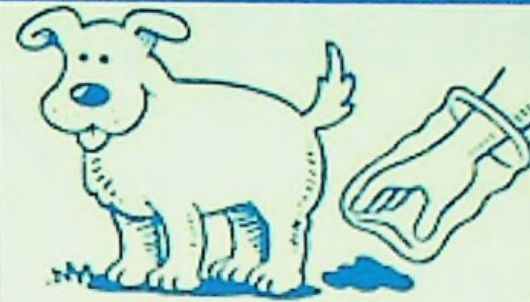
of poop per year!

What Happens to the 20 Billion Pounds of Dog Waste in the United States Per Year?



8 Billion Pounds of Dog Poop LEFT on the GROUND every year!!

SCOOP THE POOP



IT'S YOUR DOODY

Do your part to prevent water pollution.

When left on the ground, pet waste eventually breaks down and washes into the water supply, polluting our local rivers, streams, creeks, lakes and other local waterways (including drinking water sources).



The most **serious** problem associated with dog waste is the **contamination** of **water ways**.



IF YOU THINK PICKING UP DOG POOP IS UNPLEASANT, TRY SWIMMING IN IT.



IF YOU THINK PICKING UP DOG POOP IS UNPLEASANT, TRY DRINKING IT.

In just a few days, 100 dogs can produce enough bacteria that, (if left on the ground), could wash into the ocean and temporarily close all watershed areas within a 20 mile radius.

Here's the Scoop:



House flies carry many unwanted bacteria.

6 million bacteria are found on one fly's feet.

A survey in Georgia showed that a single dog dropping produced an average of 144 flies.



Fly larvae will have all that they need to survive when placed in dog poop.

Flies are attracted to the moist material of animal waste. They feast on it and lay their eggs inside it which will eventually hatch into maggots.

Among the many bacteria and diseases that can be transmitted by flies, **Salmonella transmission directly from dog waste is well documented.**



PARASITES

Visceral larva migrans (VLM) is a disease where the larvae of animal parasites invade and reside in human tissues.



The most common is the dog roundworm **Toxocara canis**



The eggs are excreted in dog feces.

Freshly passed pet feces that contain eggs are not infectious. The eggs must absorb moisture and need several weeks to develop before they can be a source of infection.

People can get roundworm from contact with feces.

Adult roundworms feed on the contents of the small intestine, lungs or liver in humans.

← TAKE AWAY →

Dog poop DOESN'T magically disappear

You are responsible to do the right thing!

It is your social and environmental responsibility

Always carry poop bags with you when you are out with your dog

Pick it up- every. single. time.

Are you too lazy to pick up poop in your yard?

Hire a dog poop collection service!

THE PAAP GUARDIANS



PROFESSIONAL PET WASTE & KITTEN LITER REMOVAL

CALL (603)948-6622

www.thepoopguardians.com



(603) 965-2259

DoodyCalls
Pet Waste Management

(781) 230-6092

REFERENCES:



WASTE



<https://smea.uw.edu/currents/scoop-the-poop-its-your-environmental-doody-pun-intended/>

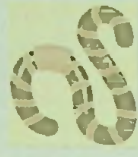
<https://www.aaha.org/publications/newstat/articles/2018-05/does-a-bear-poop-in-the-woods-yes-but-your-dog-shouldnt/>

<https://www.livescience.com/44732-eliminating-pet-poop-pollution.html>

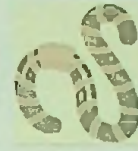
https://www.researchgate.net/publication/273366791_The_Impact_of_the_Canine_Clean-up_Law_Both_Dogs_and_People_Profit

<https://www.nrpa.org/parks-recreation-magazine/2018/november/dogs-in-parks-managing-the-waste/>

<https://cbtrust.org/project-highlight-scoop-that-poop-pet-waste-education-campaign/>



Parasites



<https://www.petsandparasites.org/dog-owners/roundworms/>

https://animaldiversity.org/accounts/Toxocara_canis/

<https://avmcww.com/2020/02/26/parasites-and-poop-the-importance-of-picking-up-after-your-dog/>



Flies



<https://furwingsandscalythings.com/why-do-flies-like-dog-poop/>



Waste Management



<https://www.doodycalls.com/eastern-ma/#~4l9J415>

<https://turdherders.net/>